

MyGinninderry Journal

ISSUE 11, SUMMER 2022



Hello!

We held a Community Workshop in October to, amongst other things, understand ways of working across communication and collaboration for the future of Ginninderry that reflect your aspirations as residents. The Ginninderry Project Team appreciated hearing the views of the 27 residents who attended, and we look forward to building on the feedback received. A summary of the Workshop can be found online: www.ginninderry.com/listening-report or scan the QR code to the right.

We plan on making Community Workshops a regular occurrence and would like to involve as many residents as possible. So, keep an eye out for more information on this soon.

The final Paddys Park Play Day wrapped up in late October with Ginninderry's first Diwali. About 150 of you braved the windy weather to enjoy music, food and Diwali-themed crafts. Thanks to everyone who has put their name down to coordinate the fun next year – we can't wait to see what happens!

As we come closer to Christmas and the Summer school holidays, the community activities will quieten down. Make sure you check out the What's On page to see which programs are taking a break. You may also like to try something different in the New Year, so if you haven't yet why not give yoga, Afrofusion, soccer, choir, fitness or something else a go! If you have a skill or some knowledge to share with the community, please get in touch. We'd love to support getting your program off the ground!

Tulitha King

Construction updates

TELSTRA TOWER

ServiceStream, the company delivering the telecommunications tower on behalf of Telstra, has informed us that the site is forecasted for construction commencement by 16 January 2023, with it expected to be operational by 28 March 2023. The map on the back page shows the expected area of coverage enhancement. For further information, please contact Paticha Vilaihongs (ServiceStream Project Manager) at 08 7071 9614 or paticha.vilaihongs@servicestream.com.au.

STRATHNAIRN PRIMARY SCHOOL

A development application has been prepared and submitted to ACT Government agencies to create the appropriate zoning for the Strathairn Primary School and adjoining open space. The current application is the first step of an Estate Development Plan (EDP) and is essentially a subdivision application. The submission is an essential part of the ACT Government EDP process, commonly referred to as entity or agency circulation. This is typically a process that takes 3 – 6 months. Once the government agencies are comfortable that the documentation submitted satisfies their requirements for assessment, the Planning Authority will then publicly notify this EDP. It is at this point the general public will have an opportunity to make comments.

If the rezoning is approved, the ACT Education Directorate will submit a separate DA for the development of the school. Ginninderry understands that ACT Education is working toward submitting its DA for the school design in 2023. The DA will be available for public review and comment through the regulatory assessment process.

MACNAMARA

Wet weather has proved challenging over the last 6 months. The Civil Contractor has been maximising on-site work during drier days, and we are hopeful that earthworks for Stage 1A will be close to completion prior to Christmas.

FUTURE PLAY SPACES

Some open spaces around the suburb are currently fenced while they go through the handover process with the ACT Government. We cannot guarantee that the areas are suitable for use until Transport Canberra and City Services (TCCS) completes its process.

SUBURB MAINTENANCE

As suburbs are constructed and landscaped, assets are transferred to the ACT Government. All completed roads, verges and public areas are generally managed by TCCS, even before owners start building. As in any suburb, any infrastructure (e.g., footpaths), parking, traffic, noise and other matters should be brought to the attention of TCCS through Access Canberra (www.accesscanberra.act.gov.au). While Ginninderry strives to deliver a high-quality suburb, we are not permitted to act on matters under the government's authority.

Scan to read the Community Workshop summary.



Christmas in the park



SATURDAY 10 DECEMBER, 5PM – 9PM

Live music, kids activities, carols, Santa photobooth, food and market stalls + more.

Paddys Park

What's On?

Go to Ginninderry's What's On page at www.ginninderry.com/whats-on/ to see all the programs on at Ginninderry. Please make sure you check the registration requirements for each program.

2022

On the regular		
Tuesday, 6.30 pm – 7.30 pm	Choir	The Link
Thursday 5.15 pm – 6 pm	Kids Yoga	The Link
Thursday, 7.15 pm – 8.15 pm	Yoga	The Link
Friday, 9.30 am – 11 am	Strathnairn Playgroup	The Link
Saturday 8 am – 9 am	Afrofusion Dance & Drumming	The Link
Sunday, 8.30 – 9.30am	Group Fitness Class	Paddys Park
Sunday, 7.30pm – 8.30pm	Soccer in the Park	Paddys Park
1st Sunday of every month, 2-4pm	Repair Café	The Link

Note: some of these programs will have a break over the summer holidays, check on Ginninderry's What's On page for the most up-to-date information.

What's On this School Holidays!



artkids™ HOLIDAY PROGRAM BOOK NOW

School Holiday Program
The Link, Ginninderry

When: Thursday, 12 January 2023
AM: 9-12 pm Fantasy Map Draw/Paint
PM: 12.30-3.30 pm Campfire S'mores Collage
\$68/session, includes materials and morning or afternoon tea

SPECIAL: Full day just \$129.20 - 5% discount*
*Sibling discounts available on half days only.
Suitable for Kindy to Yr 6 students

Book online at
www.artkidscanberra.com/schoolholidayprograms
admin@artkidscanberra.com or 0405 014 180



Spark
Ginninderry Training + Employment Initiative

SPARK JobTrainer Ginninderry Construction Program
March 2022

SPARK JobTrainer Women in Civil Construction Program
April 2022

JobTrainer ClubsACT Hospitality Program
May 2023

For more information contact:
spark@ginninderry.com
1800 316 900
Ginninderry.com/spark

Suburb savvy

Fencing

A continual reminder that once you've purchased your block, ownership passes to you, and it is no longer the responsibility of the developer. To ensure your block is protected and to reduce dumping on your site, we recommend installing fencing around your block ASAP. If you need assistance finding a fencing provider, please don't hesitate to contact myself or the sales team.

Verges

In the ACT the verge is the responsibility of the residents. This includes grass areas and where there are planted areas & trees. You

can find out more about this on the Access Canberra website. We encourage you to maintain your verge to keep Strathnairn beautiful!

Rubbish

In Strathnairn, waste collection happens on Thursdays. If you are having difficulties with pick-up, contact Suez on 02 6260 1547. Also, make sure to bring your bins in after they have been emptied.

If you notice any illegal dumping, please contact Access Canberra on 13 22 81.

Traffic

If you notice any ongoing issues regarding traffic around Strathnairn, please note the time and location and report the issue to Fix

My Street. Drake Brockman Drive can get busy with construction traffic, if you can remind your builder to be mindful of other users of this road, it would assist those living on this primary connector road.

Keep Active

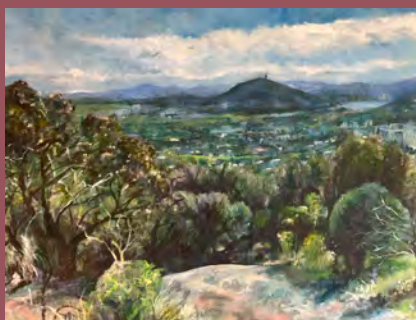
Ginninderry has been designed to prioritise pedestrians and cyclists with wide paths allowing good connectivity across the suburb. There are electric bikes for hire (free for the first two hours) at The Link building. Go to ginninderry.bykko.net to log in to the hire service.

Exhibiting at The Link



APMERE ITELAREME: REMEMBERING COUNTRY

Shaun Angeles Penangke
24 November – 17 January



TRIGGERED: HIGHPOINTS IN A YEAR'S JOURNEY AROUND THE ACT

Simone Annis
17 January – 26 February



STILL

Steven Bryant
28 February – 2 April

Verdant Verges

The lingering nature of La Niña brings lush grass, but it also brings extra mowing.

While street trees are maintained by the ACT Government, it is expected that homeowners maintain the verge (the area between your front or side boundary and the road) – also known as a nature strip.

Scratching your head about the best way to maintain grass when it grows so quickly? Enter Ginninderry's Urban Design and Landscape Manager, Matt Frawley, with some helpful tips.



The easiest way to manage your lawn is by regular mowing. Infrequent mows can damage your lawn, expose it to weed growth and dry your lawn out more quickly. The benefits of regular mowing include faster mowing, the promotion of strong growth, retention of water which keeps your verge greener, less weeds and more dense cover.

If you need to save on space, the classic push mower will do a great job on a small lawn. Remember that the longer you leave between mows, the longer it will take to mow no matter which type of mower you have.

Next is to keep your mower blades sharp and consider using a mulching mower which returns the nutrients from the grass back into the soil. When mowing, don't cut your lawn when it is too wet and don't cut it too short. Short cuts can result in bare patches which take time to grow back. The height at which you mow should be determined by the lawn type:

- Cool climate lawns, including fescue-based lawns such as Canberra Blend – regular mowing height @ 60mm
- Warm season lawns, including buffalo and kikuyu varieties – regular mowing height @ 25mm
- Warm season lawns, including couch varieties – regular mowing height @ 15mm

You can test your mowing height in a corner of your lawn before you start mowing.

In summary, a well-maintained lawn will make the area more useful, reduce the time spent mowing, look great and also be a nice cool base for children to play on in the middle of summer.

Most of all, I hope you enjoy the fruits of your labour!

All the best,

Matt Frawley

Conservation Corridor

A thriving mini Natural Temperate Grassland.

In April 2020, the Trust, together with Greening Australia, launched an exciting project to create a small-scale Natural Temperate Grassland in exotic pastureland.

Natural Temperate Grasslands are critically endangered ecosystems that host many endangered species such as the Grassland Earless Dragon, Golden Sun Moth, Perunga Grasshopper and the Pink-tailed Worm Lizard (affectionately known as Pinkie).

To create this Natural Temperate Grassland, alongside some new Pinkie habitat, the Trust established a Scrape and Sow site. This process included the removal of 10-15cm of topsoil to remove the weeds. The team then sowed mixed native grasses and forbs seeds directly onto the bare earth. The site was then fenced to protect it from stock and kangaroos.

To create Pinkie habitat, rocks that were removed as part of Strathnairn's civil works were placed around the site and bricks and logs were left to encourage ant activity, creating the right conditions for Pinkie inhabitation and to understand if Pinkies can thrive under woody debris.

Now, over two years later, there is a thriving Natural Temperate Grassland habitat site. Although no Pinkies have been found yet, there are plenty of ants and other critters to be found, including scorpions, wolf spiders, several Skinks, Cockroaches, Millipedes, Centipedes, Grasshoppers, Butterflies and Moths. With Pinkie habitat close by, we are positive the Pinkies will move in over the next few years.

The natives have been thriving with the wet weather and we are seeing an amazing response across the native grass species. The native flowers are a bit confused by the cooler weather and will slowly open up over the next few weeks. Excitingly, natives that weren't sown have appeared and we suspect that the seed has been lying dormant in the soil waiting for the chance to grow once the exotic cover was removed.

Keep up with Trust news on their Facebook page: <https://www.facebook.com/GinninderryTrust>.

Jason, Ange, Tyson, Rach & Bridie



Did you Know?

Did you know ... Our most common frog, the Common Eastern Froglet, will call during the day or night all year round, while most frogs will only call when the weather is warm or hot.

What's Happening at Strathnairn Arts Association

SHOP LOCAL THIS CHRISTMAS

Strathnairn Arts Christmas SHOP is open and bursting at the seams with original and thoughtfully handmade Christmas gifts for even the hardest to buy for!

We are proud to maintain our focus on our talented local Artists, Designers and Makers - from foodies to finery, there truly is something to be found for everyone.

SHOP local this year and support your local small businesses – Cafe Stepping Stone is also open, so make a day of it and you can get all your shopping done, and enjoy a coffee and cake, in one happy swoop.

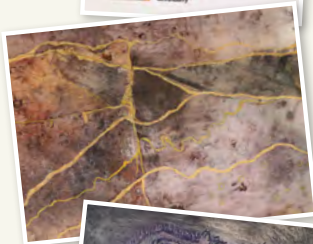
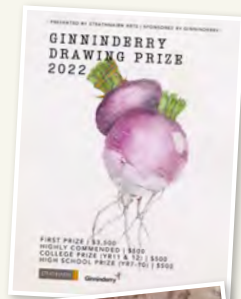
Ps. Our SHOP will also be making an appearance at Christmas in the Park!



CHRISTMAS HOLIDAY DATES

Strathnairn Arts and Cafe Stepping Stone will be closed over Christmas from 4pm Sunday the 18th of December until Wednesday the 1st of February.

The Cafe Stepping Stone coffee cart in the Display Village will be open for coffee, light lunches and snacks through January. Check their website for their Summer hours – cafesteppingstone.com



EXHIBITIONS DECEMBER 2022

GINNINDERRY DRAWING PRIZE 2022

Online | Saturday 19th Nov - 11 Dec 2022

Sponsored by Ginninderry | Presented by Strathnairn Arts Association (SAA), this exhibition is an Australia-wide, non-acquisitive competition for drawings of any subject. This year the exhibition will be held online at www.strathnairn.com.au – visit our website to see the winning entries for 2022.

WEATHERING | BARBARA DAWSON + JUDY PANUCCI

Homestead Gallery 1 | 16 Nov - 18 Dec 2022

Barbara and Judy are exploring the erosive processes of time and its agents within the merging of the natural and human environment. The two artists have created abstract landscapes of outer and inner worlds. Barbara's and Judy's works differ in approach and yet both artists find they are compelled to explore and represent their experiences of weathering.

Image: Barbara Dawson, Fragment, Ink & mixed media 23cmx17cm & Judy Panucci, Sea Kelp. Tenacity, Acrylic on carved birch board.

FOOTBALL TRIPS OF THE MID-SIXTIES TO THE EARLY SEVENTIES | MICHAEL MOLONY

Homestead Gallery 2 | 16 Nov - 18 Dec 2022

'Football trips of the mid-sixties to the early seventies' is a series of paintings of VFL footballers on their end of season 'footy trip'. Italian cities, cathedrals and piazzas are a highlight.

Image: Cold Day in Arles. Sleeveless or long-sleeved for the exhibition match in 1971, Percy decides.

EXHIBITIONS FEBRUARY 2023

SHORELINES | AMELIA MOLLETT

Homestead Gallery 1 | 15 Feb - 12 Mar 2023

'Shorelines is an exhibition about walking with my dog along the edge of Lake Burley Griffin. I am inspired by the silhouette of trees and reeds against the reflections on the water framed by the sky and mountains. Using line, colour, pattern and collage I play with the memory of this experience and setting the mood.' Amelia Mollett

Image: Amelia Mollett, In Studio

THE HEARTLAND | CASSANDRA DOVE

Gallery 2 | 15 Feb – 12 Mar 2023

'The Heartland was inspired by a recent visit to Uluru and Kata Tjuta National Park. That massive blanket of cobalt above me, reds I had never seen before, and tussocks of sage greens remain with me and are the real heroes of this body of work. Being immersed in this landscape humbled me. I left with a strong desire to create art that captures the feeling of being in a place like no other. These abstract representations with their lively paint strokes are a celebration of the Central Australian landscape. I hope my paintings bring you to a space where you can see and feel the energy of this magnificent heartland.' Cassandra Dove

Image: The Family Cave, Cassandra Dove

Meet the Neighbour!

With daughter Gina and her husband James, Joe and Betty (pictured) are building one of Ginninderry's first intergenerational houses with room for both families to flourish together.

Joe and Betty have had a long and varied life together including Alpaca farming, running a B&B, running a stall at the Bus Depot Markets for many years and now embarking on the adventure of building. They are up for anything!

Joe was a ground engineer with Qantas before retiring and taking up Alpaca farming with Betty. Knowing nothing about farming they learned the craft as they went. Alpaca wool is not like sheep wool, it is a fibre and is therefore better for people with allergies. Wanting to make and sell knitted garments, Joe put his engineering mind to work and figured out how to manufacture garments commercially, at scale. Together they sold their creations at the Bus Depot Markets for many years while also running a Bed and Breakfast.

After a second retirement from Alpaca farming, they were living in the Southern Highlands when health issues caused them to think about moving closer to their daughter in Canberra.

They moved into a retirement home but then began looking at properties where they could live as two families together. After finding Ginninderry and falling in love with the views of the Brindabella Mountains, they made the decision to buy land and build a house together.

They can't wait to unpack their boxes and move into their new house and finally look out at the sunset over the Brindabellas with a glass of champagne in hand!

The story doesn't end there, though! Not ones to slow down, Joe is investigating his Hungarian roots by learning about free motion machine embroidery in order to create the traditional Hungarian patterns of his heritage. Watch this space!



WOULD YOU LIKE TO FEATURE IN A MEET THE NEIGHBOUR?

Contact Tulitha at community@ginninderry.com to get started – we'd love to share your story!

Stay Connected

Stay up to date on Facebook and Instagram with what's happening around Ginninderry:

Ginninderry Resident:
Join the group Ginninderry Locals (@ginninderrylocals)

The Conservation Corridor:
Ginninderry Conservation Trust (@ginninderrytrust)

Ginninderry Community:
Ginninderry Community (@ginninderry)

New telecommunications tower – expected area of coverage

