

Strathnairn Arts



A Bush Christmas Shop

Our Christmas SHOP is now open and overflowing with art pieces and locally designed and made gifts, as well as curated Australian made gifts for all your loved ones. From one-off ceramics or textiles to toys, clothes, cards and homewares, you will find something for even the hardest to buy for.

Open 10am–4pm Thursday–Sunday every week between 19 November–20 December

Christmas Kids Craft Workshops!

Calling all creative Christmas Elves! Strathnairn Arts will be hosting 5 workshops for kids who want to make a real and unique Christmas present for their parents, relatives, friends and pets!

Mother Nature will be our inspiration and Christmas and New Year will be our theme. These workshops will be creative, messy, wonderful and engaging! Activities will be expertly guided by Elena, and appropriate for the ages of the children attending.

5 classes are available, book now online: strathnairn.com.au. All the classes will be held in the Wool Shed.

Upcoming Exhibitions

Lily Sharrock | Creativity on Wheels

Gallery 2 | 3–20 December 2020
2019 recipient of the Audrey Fagan Young Woman's Enrichment Grant.

Annie Parnell | Ceramics

Gallery 1 | 11 February–4 March 2021
2019 recipient of the ANU School of Art and Design Emerging Artist Support Scheme (EASS) Award.

Strathnairn Arts is open between 10am and 4pm, Thursday to Sunday, and will be closed from 20 December to 4 February 2021.

Stepping Stone Café is open between 9am and 4pm, Thursday to Sunday and 4pm to 7pm on Friday. It will be closed from 21 December to 23 January 2021.

Arts Spot

Are you aware of the GX Art Trail? We are excited to introduce almost 30 new artworks into the homes of the GX Display Village. This is an art show that connects the Ginninderry development to the rich and fundamental connection this place has with the arts. It is a unique opportunity for local artists to display their works.

The GX Art Trail invites visitors to reimagine these artworks on their own walls and shelves. In September this year we received almost 100 submissions of artworks from a range of great artists in Canberra. With the help of Belconnen Arts Centre and Arts ACT we had a hard choice selecting thirty of these pieces for exhibition.

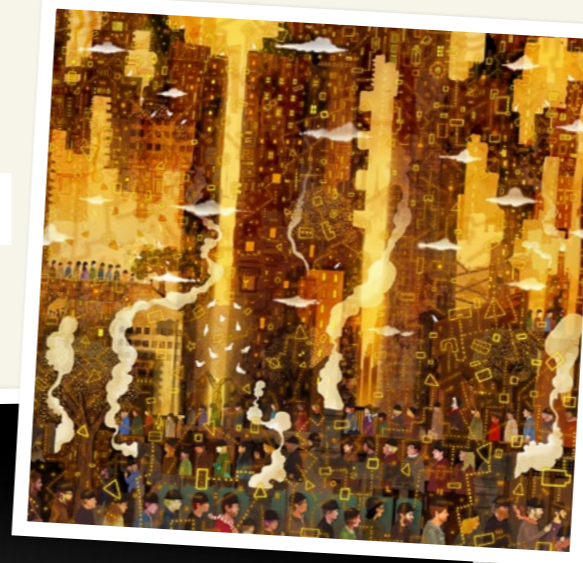
Artists who have submitted their works include Debra Jurrs, Rosemary von Behrens, Paul Summerfield and Jenny Blake. There is a fantastic range of creative styles, from glassworks inspired

by deep ocean flow's, to large abstract landscapes.

All artworks in the GX Art Trail are for sale, and with this refresh we would love to see these local artists rewarded with sales. This is a great way to get something unique for your home or purchase a distinctive, and locally created gift.



Paul Summerfield,
Night Falling 2017



Debra Jurrs, Liftoff 2018



Jenny Blake, Canberra Grass Fire n° 1 2019

Stay Connected



Stay up to date on Facebook with what's happening around Ginninderry:

Strathnairn Resident: Join the group Strathnairn Locals (@strathnairnlocals)
The Conservation Corridor: Ginninderry Conservation Trust (@ginninderrytrust)
Ginninderry Community: Ginninderry Community (@ginninderry)

Ginninderry Journal

ISSUE 3, SUMMER 2020

Hello!

As we finish this year, we are beginning to look toward next year's calendar. I am thankful that, in the ACT, we have been able to continue to meet in person. What is occurring all around the world just doesn't allow us to forget how lucky we are. Now is a great time to continue to build those community connections to ensure the resilience of our neighbourhoods well into the future.



With such a diverse community at Strathnairn it would be great to share and learn about some of your own significant and cultural events in 2021, and I have already begun talking to community members about Diwali and Ramadan. I'd love your input if you'd like to share any of these with our growing community, please get in touch if you'd like to help out via community@ginninderry.com. I can't wait to hear from you!

Of course those daily connections are just as important as our special events. I have been enjoying seeing and meeting the families out, walking around the suburb, in the evenings. It's fantastic to see children riding their bikes or scooters around the suburb and enjoying the common space around The Link, walking along the Bicentennial National Trail and the great walking paths around the suburb. I can only hope that this continues.

With that I wish you all a wonderful summer holiday and I hope you enjoy the company of family and friends this Christmas and New Year. I look forward to seeing many of you in person at our end of year event, Christmas in the Park (don't forget to register!)

Tulitha King



News

The wettest October in 40 years turned out to be a great time to run A Month of Wildlife, as I'm sure you'll have noticed! From the abundance of frogs and water creatures, including turtles, damselfly, dragonfly and water boatmen, among many others, to the profuse growth of plants in the Conservation Corridor and around the suburbs – it has been a wonderful year for our plants and animals to flourish. It's also been a great season to get to know our local and natural world us, as travel continues to be limited.

We really enjoyed running A Month of Wildlife and I'd love to hear from you about any feedback and suggestions you have for this event as we consider hosting it again next year. Highlights for me were hearing the cacophony of Frog calls in the dripping rain at night, discovering the immense diversity of water creatures with many excited children (and adults) and watching the sun set over the Brindabella ranges with a lovely group of people, while learning from Clare and Larry about their journey into conservation.

Spring has also seen the sprouting of some new programs in Strathnairn. A great group of local parents have launched the Strathnairn Playgroup on Tuesday mornings, the Ginninderry Choir has also started up again with conductor Marie-Cecile Henderson and yoga is coming soon!

I am very much looking forward to 2021 in Strathnairn! I hope you are too.

Suburb Savvy

Keep Active

There are electric bikes for hire (free for the first two hours) at The Link building. If you need help logging on, please ask staff at The Link building.

Drake Brockman Drive can get busy with construction traffic, if you can remind your builder to be mindful of other users of this road it would assist those living on this primary connector road.

A new walking track will begin from The Link building, skirt around the edge of the Conservation Corridor and continue for 3.2km to Shepherds Lookout. It is coming in the first half of 2021 and will take in some and varied terrain and stunning views.

Fencing

A reminder that once you've purchased your block, it is no longer the responsibility of the developer. To ensure your block is protected and to reduce dumping on your site, we recommend installing fencing around your block. If you need assistance finding a fencing provider, please don't hesitate to contact myself or the sales team.



Verges

In the ACT the verge is the responsibility of the residents. You can find out more about this on the Access Canberra website. We encourage you to maintain your verge to keep Strathnairn beautiful!

Rubbish

In Strathnairn, waste pick up happens on Thursdays. If you are having difficulties with pick-up contact Suez on 02 6260 1547. Also make sure to bring your bins in after they have been emptied.

If you notice any illegal dumping please contact Access Canberra on 13 22 81.

Traffic

If you notice any ongoing issues regarding traffic around Strathnairn please make a note of the time and location and get in touch with our team.

Construction Update

The neighbourhood park is nearing completion with a special launch event planned for 12th December. We'd love to see you there to open what is sure to become a centre of community life for Ginninderry residents.

What's On?



Christmas in the Park

Help us launch our first neighbourhood Park, Paddys Park, with Christmas in the Park on 12th December.

Registrations are essential for this event. Go to ginninderry.com to learn more and register.



Your Sustainable Home

Jessica Stewart, Sustainability Manager, will be able to answer your questions about Ginninderry's sustainability requirements for your new home. Just drop into The Link building!

Ask about:

- NatHERS ratings;
- Solar panels;
- Demand management systems;
- Inverters;
- Batteries;
- Double glazing;
- Airconditioner systems;
- Water fixtures and fittings;
- Rainwater tanks;
- Hot water systems;
- Induction cooktops;
- Cat containment.

When: 1st Wednesday of the month from 4pm til 7pm



Choir

The Ginninderry With One Voice Choir meets each Tuesday night during the school term to sing and share a cup of tea together. It is open to anyone over 12 years who would like to experience the joy of song. We'd love to see you there, come along and try a rehearsal for free when we kick off again on 2nd February 2021.

Where: The Link Building

When: Each Tuesday during school term

Contact: witnonevoiceginninderry@gmail.com

Thanks to Calibre for their generous sponsorship of the Ginninderry With One Voice Choir this year.



Strathnairn Playgroup

When: Every Tuesday 9:30-11am (during school term)

Where: The Link Building - 1 McClymont Way, Strathnairn ACT 2615

Bring: Hat, water and \$2 donation towards tea/coffee

BYO: Morning tea

For more information please email strathnairnplaygroup@gmail.com

Summer Gardening

Without doubt Canberra's Summer is the most difficult time of the year to maintain a healthy garden. Ginninderry's Landscape Manager, Matt Frawley and Joe McDonnell, from Gold Creek Landscape Services, share some tips to help keep your garden happy through this tricky season.

- ✓ Use the **Deep Watering** method. Water less often and for longer periods of time.
- ✓ If your soil is dry then water for short periods of time.

- ✓ Water early in the morning and not during the heat of the day.
- ✓ Fertilise your lawn regularly. Apply a granular fertiliser at the start of December before it gets too hot. Follow this up with another application at the end of February.

- ✓ Mow your lawn regularly. This will help to control weeds, provide shade to the soil and root zone and reduce evaporation. (As a guide cut couch grass no lower than 15mm, buffalo no lower than 25mm and Canberra blend no lower than 60mm. Have a look at the Turf Trial in the Display Village to see a variety of lawn types.)

- ✓ Mulch your gardens and pot plants to a depth of 50-75mm to reduce the

evaporation of the soil's moisture. Thick mulch will reduce the amount of rain that can get into the soil which means you will have to rely on more irrigation.

- ✓ Protect seedlings or new plants from the heat by using some shade cloth until they get established.
- ✓ A slow release fertiliser and the occasional application of a liquid fertiliser like Seasol will provide your plants with the nutrients they need to thrive.
- ✓ Plants in pots have very limited access to moisture and can get hot. Ensure pot plants are mulched and shaded. A tray below your pots will help retain some water for the plants to take up when needed.



Summer Planting guide

If you intend to plant some new plants this Summer some simple steps will improve their chance of survival.

- 1 Dig a hole twice the size of the pot you are planting.
- 2 Cultivate the base of the hole so that the soil is loose and will allow moisture to slowly seep out.
- 3 Fill the hole up with water prior to planting, allowing the water to soften the subsoil before you plant.
- 4 Add a water crystal into the soil prior to backfilling, this will help retain moisture immediately adjacent to the root zone while your plant is developing its new roots.
- 5 Water the plant in well and then mulch to lock in moisture straight after planting.

Contribute to the Strathnairn Residents social media series!

Would you like to share your story with us on Social Media? We'd love to hear from our residents on their favourite things about living at Ginninderry. If you'd like to join in please contact Tuli at community@ginninderry.com to participate.



Conservation Corridor

As 2020 nears an end, here's a glimpse of what's been happening in the Conservation Corridor this year!

Our cattle are part our conservation management strategy for weed and biomass control. They are also very curious and enjoy visitors!

We've seen some cool critters in our Conservation Corridor this year including Wallaroos, Pink-tailed Worm-lizards, Olive Legless Lizard, Echidnas, a Cross-dressing Grasshopper, Water Dragons, Superb Parrots, Red-bellied Black Snakes, and a Southern Old Lady Moth... just to mention a few.

In October our SPARK/CIT students, local volunteers and Ginninderry team helped us with our Pink-tailed Worm-lizard monitoring. Good news... they located nearly 100 resident Pinkies across a week of surveys.

Nicki Taws from Greening Australia led our second bird/plant identification walk in November. Superb Parrots, Chocolate Lilies, Golden Weather Grass were spotted among many other species.

Our NAIDOC week activities in November were a big hit with participants. Adam Shipp (Yurbay Consulting) ran a native foods cooking class and Aaron Chatfield (Dreamtime Connections) delivered an interactive native plant use workshop. These events formed part of BelcoArts NAIDOC in the North 2020 celebrations, which the Trust was proud to be a part of.

Keep an eye on our Facebook page for regular updates, photos and interesting snippets about the Conservation Corridor. facebook.com/GinninderryTrust

From our team to all of you, we wish you a happy Christmas and New Year and look forward to welcoming you back to the Corridor in 2021.

Jason, Ange, Tyson and Rachel
ange.calliess@ginninderry.org

